

## Best practice Slovakia

# Collection of household food waste

Mgr. Martina Gaislová, MBA  
JRK Slovensko



# Best practice

- **Partizánske**

City of 23 000 inhabitants

- **Bratislava**

Capital city, 425 000 inhabitants





**SINGLE FAMILY HOUSES**



10 l organic waste containers and compostable bags



containers for door - to - door collection



**CONDOMINIUMS**



10 l organic waste containers and compostable bags



120/240 l container for biowaste



Inspired by Italy under the leader consultant Marco Ricci



PRE MENEJ ODPADU

## Partizánske



## Bratislava



Source: Friends of the Earth – SPZ o.z., City of Bratislava

# Communication

Distribution

Software ELWIS-Start

Meetings with residents

Newspaper

TV, radio

Social media



16. mája 2022 18:29 Bratislava Klimatická zmena Ochrana prírody Odpad Životné prostredie

## Bratislavčania dostávajú hnedé koše na kuchynský odpad. Ako ho triediť, aby netiekol, nezapáchal a nevábil hlodavce a mušky?

TOMÁŠ GREČKO [+](#) Zapnúť články e-mailom



PRE MENEJ ODPADU

facebook

E-mail alebo telefón

Heslo

Prihlásiť sa

Zabudli ste údaje k účtu?

Watch

Domov

Naživo

Zábava

Relácie

Preskúmať

Hľadať videá



### Rozbiehame zber kuchynského biologicky rozložiteľného odpadu

Páči sa mi to · Komentovať · Zdieľať

1,3 tis. · 84 komentárov · 31 tis. pozretí



Matúš Vallo má rád Bratislavu

Sledovať

23. september 2021 ·

Rozbiehame zber kuchynského biologicky rozložiteľného odpadu...

Zobraziť viac

Najrelevantnejšie

1 odpoveď



Erika Lučeničová

Super, podporujem to. 😊 Snažíme sa všetko dôsledne triediť, zbierame aj bioodpad. Vidím, že toho odpadu potom hádzem do komunálneho odpadu minimum. Keďže bývame v bytovke platíme stále rovnako za smeti, čo ma síce hnevá, ale aj tak to budeme robiť naďalej. 😊

50 t.



Kristina Michalčova Gardavska

Dnes sme dostali košíky, tešíme sa 🙌

50 t. · Upravené



Jana Benčíčová

Som z Lamaca. Super 🙌

51 t.

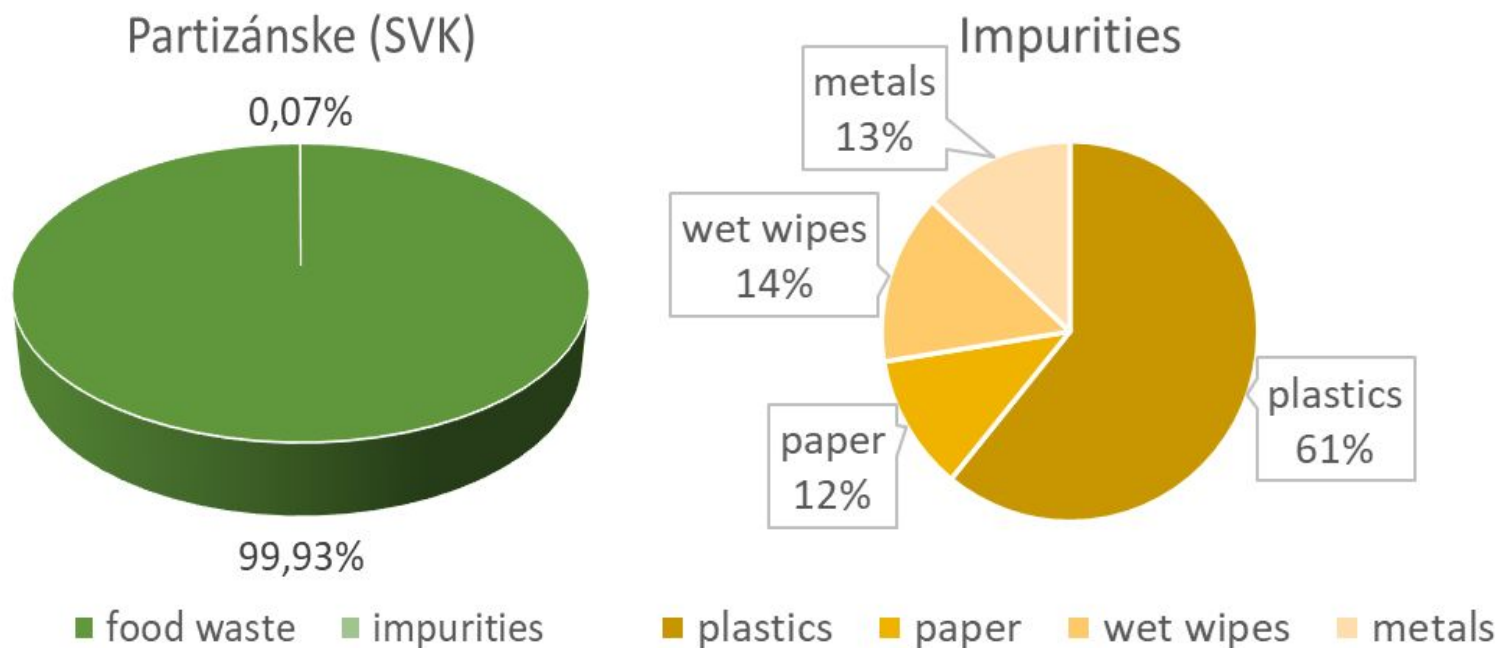


Zlata Hudecová



PRE MENEJ ODPADU

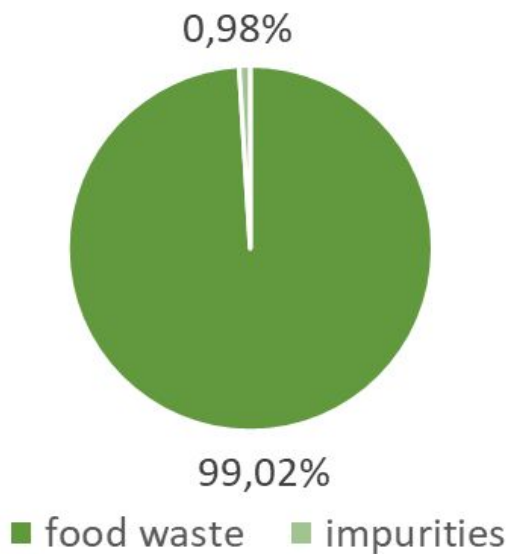
# Partizánske



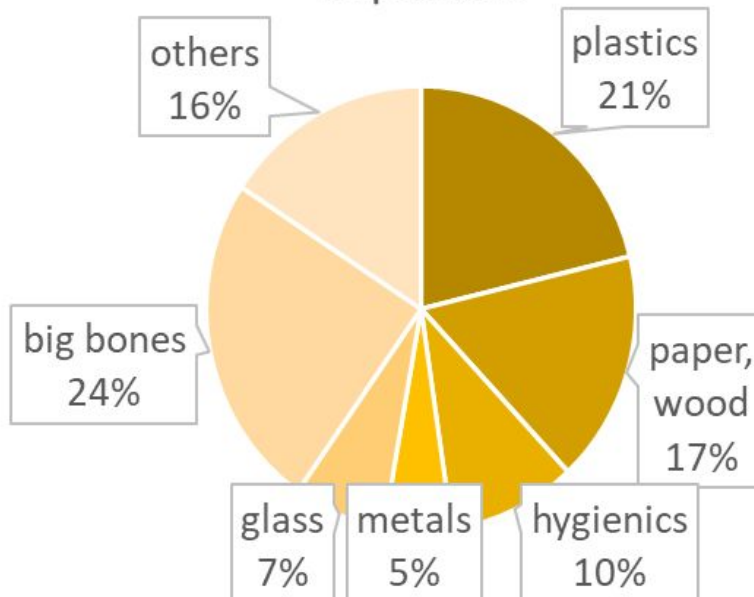
352 kg of food waste from all areas of the city was analysed

# Bratislava

Bratislava (SVK)



Impurities

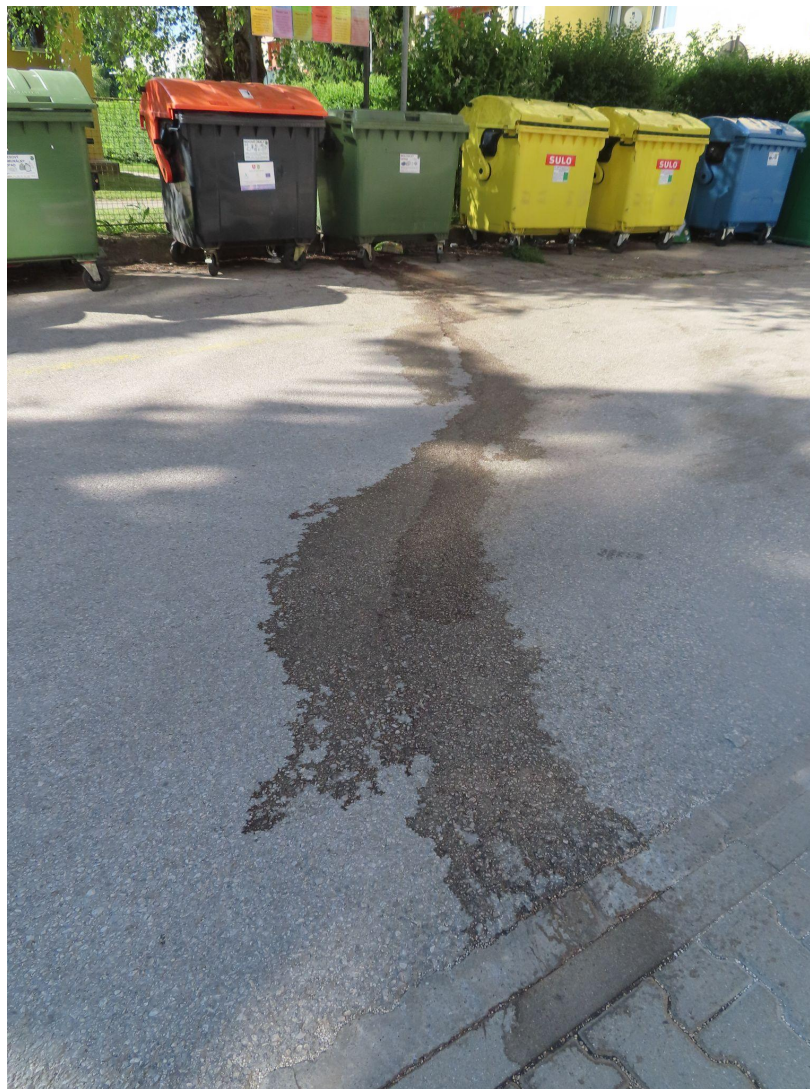


736 kg of food waste from pilot area was analysed





PRE MENEJ ODPADU



Source: ZENZO o.z.

# Take aways



- Communication – before, during, after and for ever – all ages, all groups, all people - you need a plan!
- Correct infrastructure – vented caddy + compostable bags + short delivery distance to container on the street
- Communication
- Compostable bags – certified, quantity for 1 year, ideal to prepare ban for plastic shopping bags (fruits, vegetables, bread...)
- Communication
- Distribution is a way how to directly and effective educate people
- Communication
- Government has to be a role model
- Communication
- Monitoring on family level and later implementation of PAYT system
- Communication
- High frequency for food waste (2x/week) and low frequency for MSW (1x/2-3 weeks)



PRE MENEJ ODPADU

# Thank you for your attention

**Mgr. Martina Gaislová, MBA**

JRK Slovensko

- +421 911 745 607
- [martina.gaislova@menejodpadu.sk](mailto:martina.gaislova@menejodpadu.sk)
- [www.menejodpadu.sk](http://www.menejodpadu.sk)





# Achievements – still in pilot phase

Activity / tools	S1	S2	S3	S4	S5	S6	S7
<b>Waste Analysis</b>	✓	✓	✓		✓		
Roadmap / project, external consultancy	✓	✓					
<b>Free vented caddies for residents</b>	✓	✓	✓	✓		✓	
<b>Free compostable bags for residents</b>	✓	✓	✓	✓	✓	✓	
Bin max. 240 l for bio waste	✓	✓		✓			
<b>Short delivery distance</b>	✓	✓	✓	✓	✓		
Optimal capacity (250 l / resident per year)	✓	✓		✓	✓		
D2D collection	✓						
<b>Collection frequency 2 times a week</b>	✓		✓	✓	✓	✓	✓
Passportization, monitoring	✓				✓		
Financial motivation - PAYT							
<b>Communication campaign</b>	✓	✓	✓	✓	✓	✓	✓
Flyers	✓	✓	✓			✓	✓
Caddy and bag labels/printing			✓			✓	
Special web			✓				
Social media	✓	✓	✓	✓	✓	✓	✓
Extended campaign	✓						
Education D2D	✓	✓					
Communication of benefits	✓	✓	✓	✓	✓		
Free compost	✓				✓	✓	
Local activists and groups	✓		✓				
<b>Collected food waste / inhab. / year</b>	<b>81,80</b>	<b>46,00</b>	<b>36,80</b>	<b>36,00</b>	<b>32,50</b>	<b>2,20</b>	<b>8,80</b>